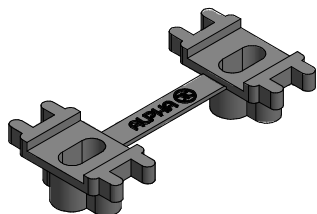
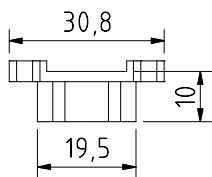




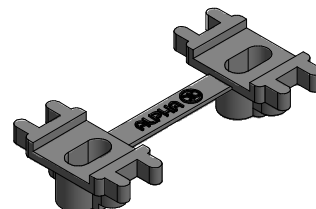
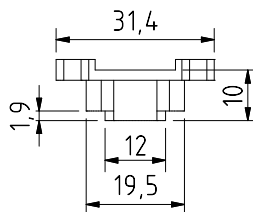
CM18



Aplicado nas séries tipo:

SAPA » ES+ (45°)
ALUNIK » RT90

CM19

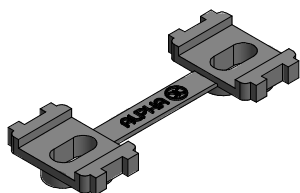
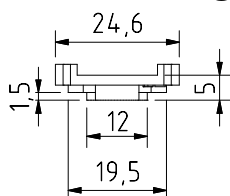


Aplicado nas séries tipo:

LINGOTE » L63000
AALCO » 61COR EVO
PREBUILD » PR60

ALPHA®

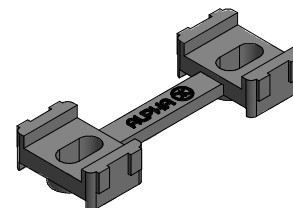
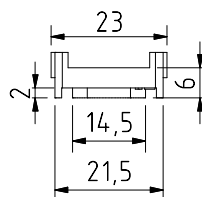
CM20



Aplicado nas séries tipo:

ALUAR » MODENA 45°
PREBUILD » PB04

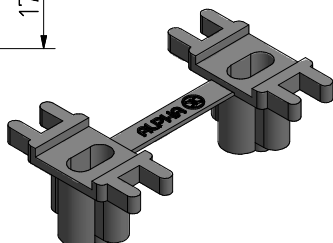
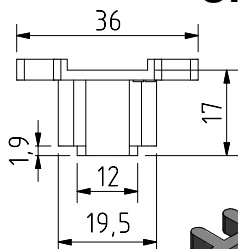
CM21



Aplicado nas séries tipo:

H.EUROPEOS » S-80 / 4000 / 4600

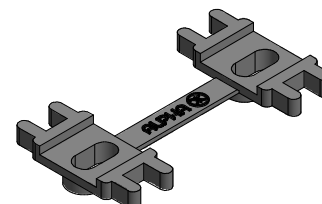
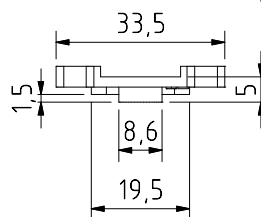
CM22



Aplicado nas séries tipo:

H.EUROPEOS » S-150 / 10000

CM23



Aplicado nas séries tipo:

ALDOM » PA80

Observações # Comments # Observaciones # Observations:

© 2019 - ALUALPHA, Fabrico e Comercialização de Ferragens S.A. | Todos os direitos reservados | All rights reserved | Todos los derechos reservados | Tous droits réservés

Nota: O conteúdo desta folha técnica é puramente informativo. A instalação é feita com total responsabilidade do instalador. The content of this technical sheet is purely informative. The installation is done with total responsibility of the installer.
A Alualpha reserva-se o direito de proceder, sem aviso prévio, a mudanças ou modificações técnicas dos produtos apresentados. The Alualpha reserves the right to proceed without notice, to changes or technical modifications of the products presented.