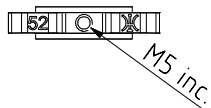
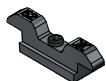
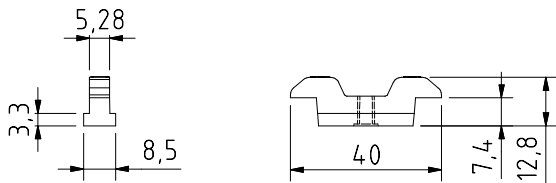


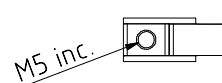
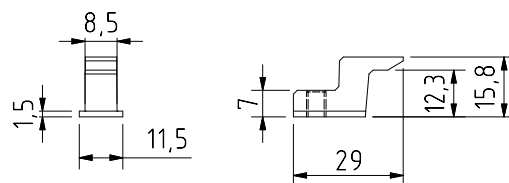


**N52**



**Aplicado nas séries tipo:**

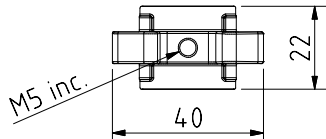
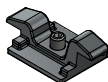
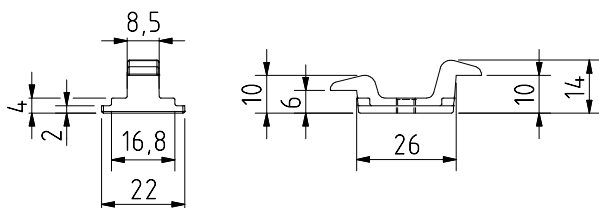
**N57**



**Aplicado nas séries tipo:**

**Inova  
Suprema**

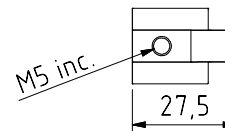
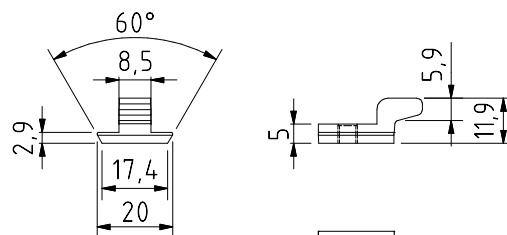
**N58**



**Aplicado nas séries tipo:**

**Suprema**

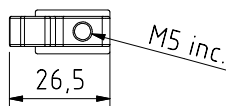
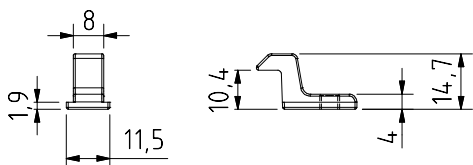
**N59**



**Aplicado nas séries tipo:**

**Inova  
Alunik » RT85**

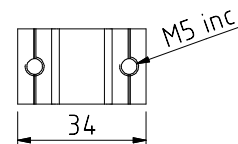
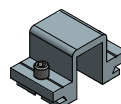
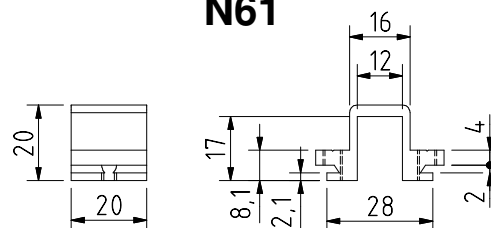
**N60**



**Aplicado nas séries tipo:**

**Inova  
Suprema**

**N61**



**Aplicado nas séries tipo:**

**Inova**

Observações # Comments # Observaciones # Observations:

© 2018 - ALUALPHA, Fabrico e Comercialização de Ferragens S.A. | Todos os direitos reservados | All rights reserved | Todos los derechos reservados | Tous droits réservés  
Nota: O conteúdo desta folha técnica é puramente informativo. A instalação é feita com total responsabilidade do instalador. The content of this technical sheet is purely informative. The installation is done with total responsibility of the installer.  
A Alualpha reserva-se o direito de proceder, sem aviso prévio, a mudanças ou modificações técnicas dos produtos apresentados. The Alualpha reserves the right to proceed without notice, to changes or technical modifications of the products presented.